

a **sevensoft™** company

CARINI™

Auction Tracker Guide

RYAN D. MARSHALL
CHIEF ARCHITECT

RYAN@SEVENSOFT.COM
SEVENSOFT.COM

FEBRUARY-2017

Auction Tracker

MAIN CONTROLS OVERVIEW

- a** Toggle Main Menu
Open or close main menu.
- b** Auction Selection
- c** Auction Map Selection
- d** Toggle Settings Window
- e** Auction Detail
Select any listed events to navigate to the inventory view.
- f** Settings Window
(see below)



Auction Detail Window

a Auction Detail
Screenshot shows auction detail windows with and without a current event.

b Auction Event
Navigate to the **Auction Inventory-View** by a **click** or **tap** on the event detail.

Open **AUCTION DETAIL** dialog windows by:

c SELECTING an auction from the **auction drop-down**.

OR

d SELECTING an **auction icon** on the map.



Auction Selector

Tracked inventories for current auction events are displayed alongside the auction names in the list.

Auctions that are part of a greater family are grouped together in the selection list.

Use the text entry field to perform a partial text search for auction by-name or by address.

The screenshot displays the Carjini Auction Tracker interface. On the left, a sidebar lists various auction categories and their respective vehicle counts:

- America's Auto Auction**: 207 (Huntsville: 134, Houston: 230, Atlanta: 347, North Houston: 356, Greenville: 25, Austin: 281)
- Pyle Equipment Auctions**: 34 (Capital City Auto Auction, Mountain State Auto Auction)
- Corry Auto Dealers Exchange**: 132 (Corry Auto Dealers Exchange, Winchester Auto Auction)
- Stanley Auctions**: 155 (Carolina Auto Auction, Indiana Auto Auction)

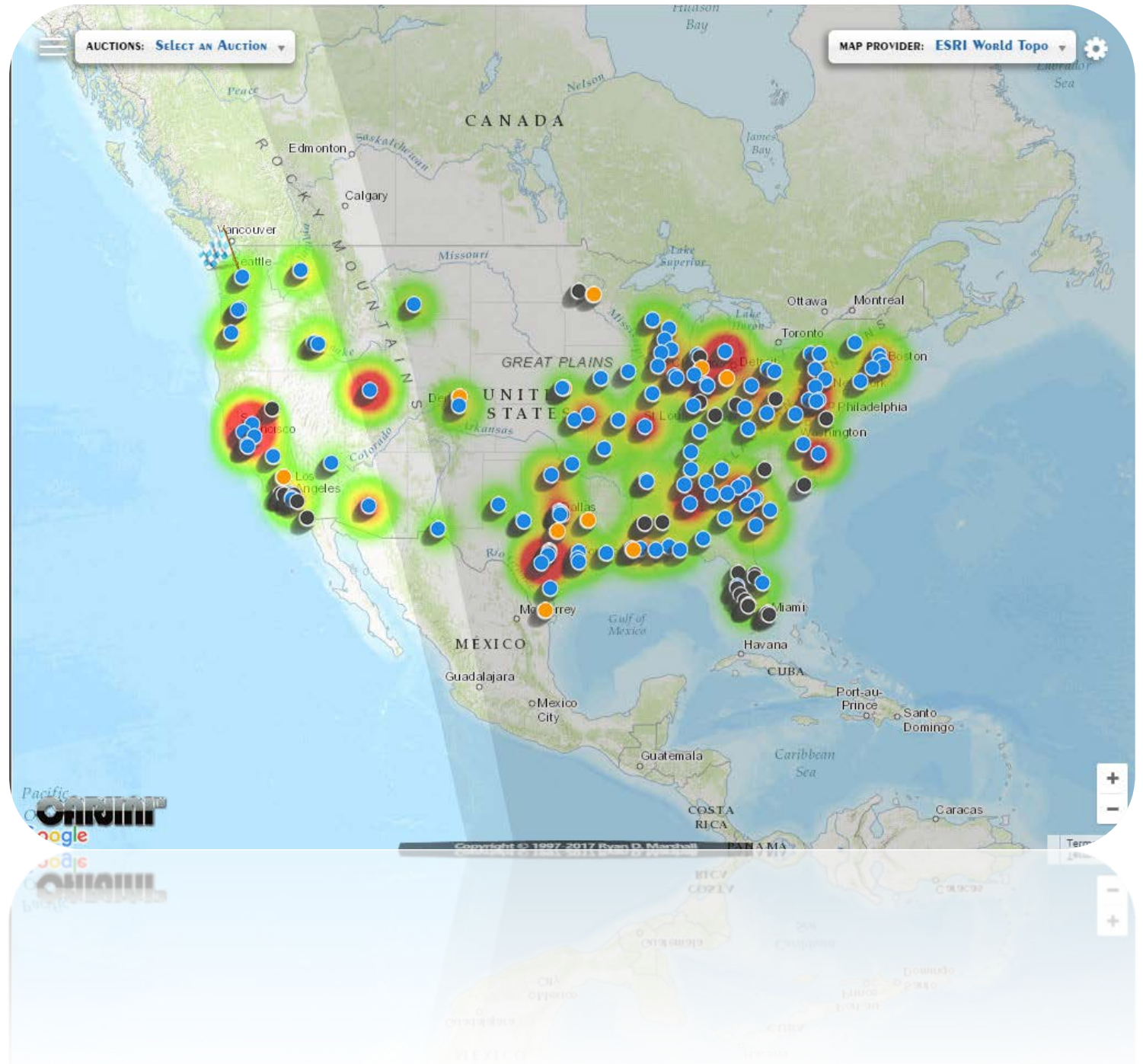
The main map shows the United States with numerous colored pins representing auction locations. A tooltip for Pensacola indicates 25 vehicles. The map includes a search bar at the top left, a map provider selector (ESRI World Topo) at the top right, and navigation controls (zoom in/out, full screen) on the right side.

Daylight Overlay

Tracks the current position of sunlight hitting the earth and the daybreak and sunset as it moves across the nation.

The daylight overlay may be disabled in the configuration settings window. (see above)

Screen capture of **Daylight Overlay** taken in the late-afternoon pacific-time.



Auction Tracker Customization

CONTROLS

- a Open Configuration**
- b Heatmap Controls**
Configure heatmap characteristics.
- c Indicator Controls**
Configure auction icon representations on the map.
- d Daylight Overlay**
Enable or disable real-time global daylight tracking.
- e Geo-Location Service**
Enable or disable user location tracking.



HEATMAP

Auction Heatmap Controls

- a Heatmap Toggle**
Enable or disable heatmap display.
- b Radius Slider**
Adjust radius of heatmap in proportion to inventory density.
- c Opacity Slider**
Adjust the opacity of the heatmap color overlay.
- d Intensity Slider**
Adjust the intensity of the heatmap colors in relation to the inventory density.



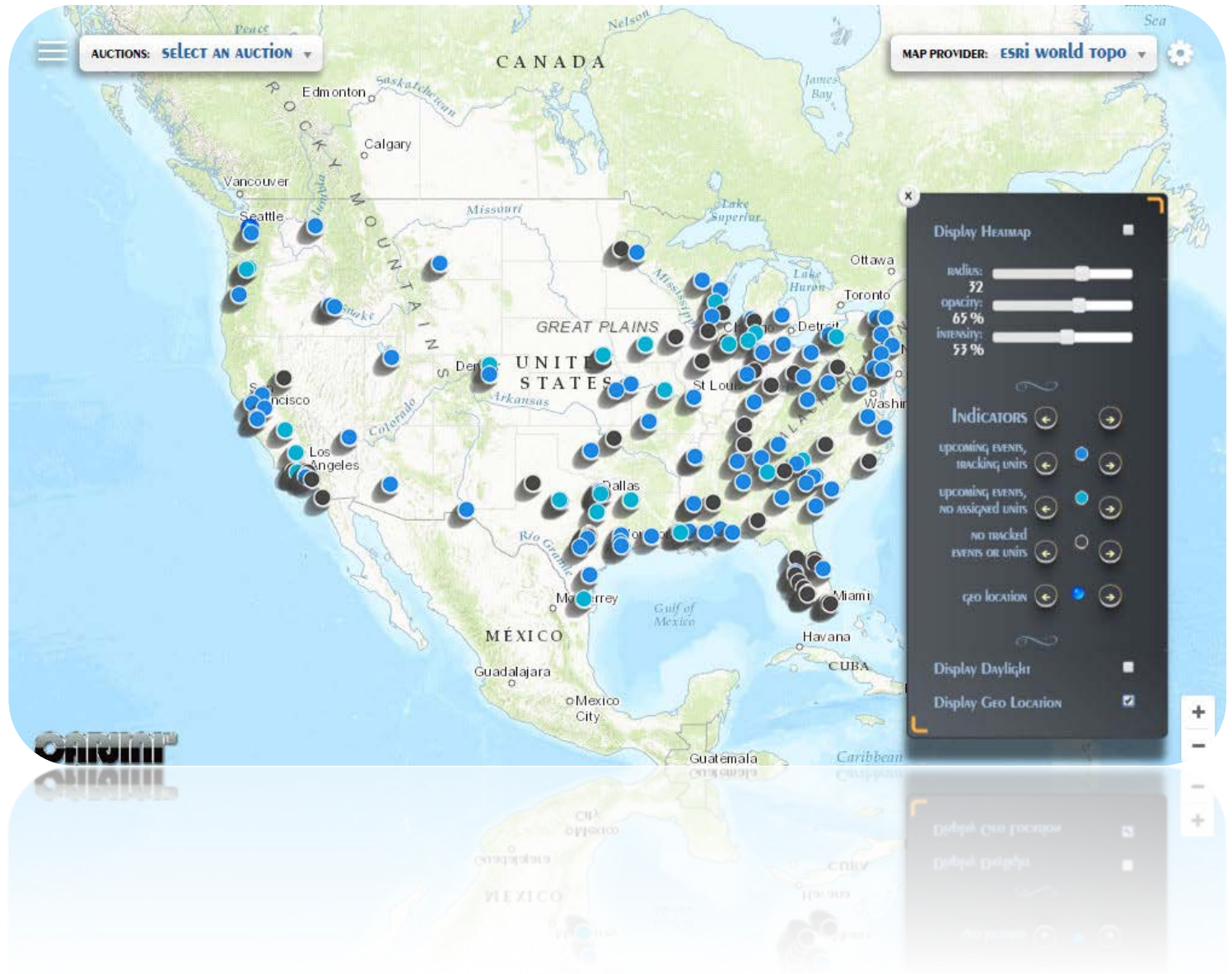
Auction Heatmap: Default Settings

Heatmap with default settings.



Auction Heatmap: Off

Display with heatmap turned off.



Auction Heatmap: Opacity

Heatmap with the opacity reduced.

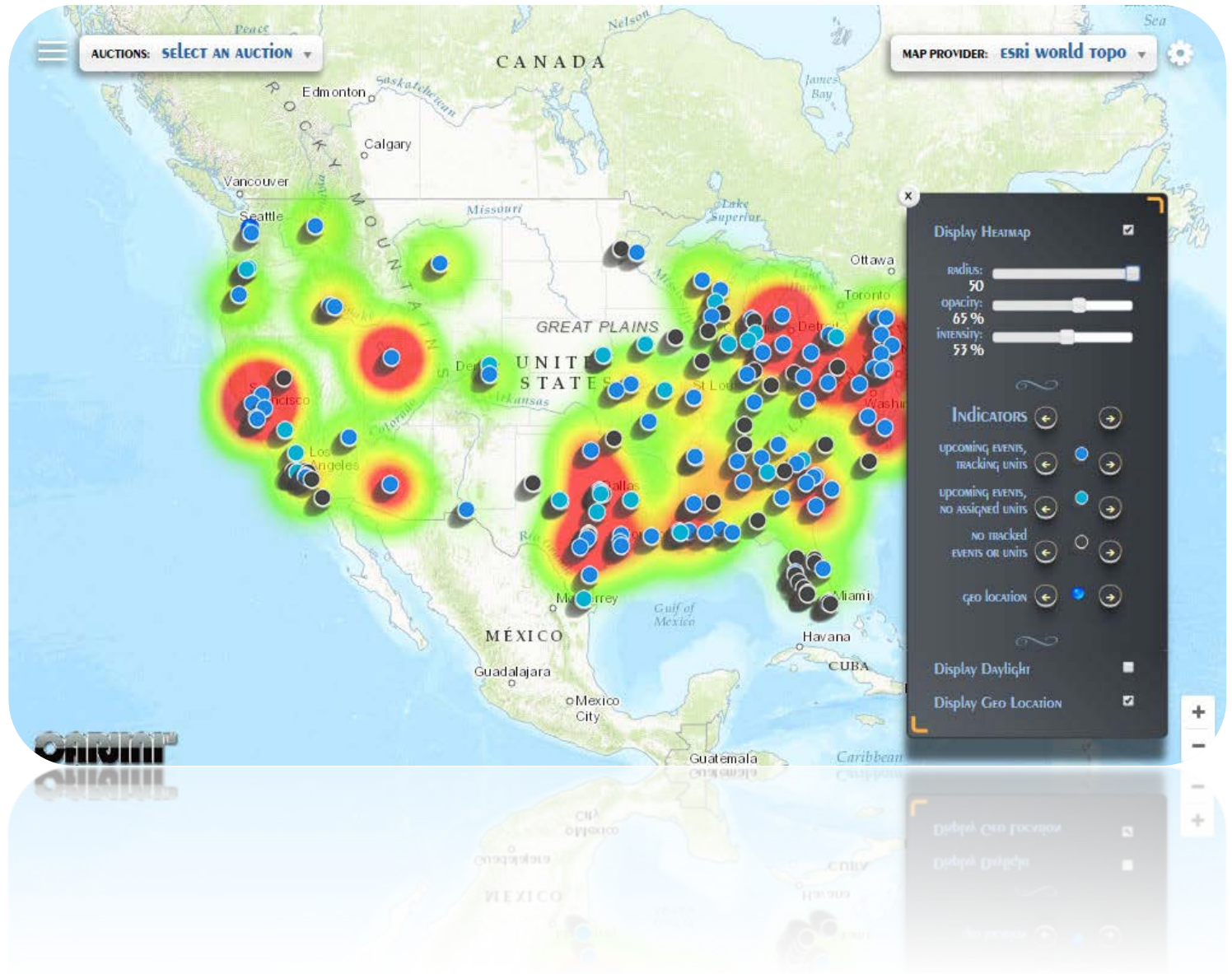


Auction Heatmap: Radius

Heatmap with the radius set to the maximum value.

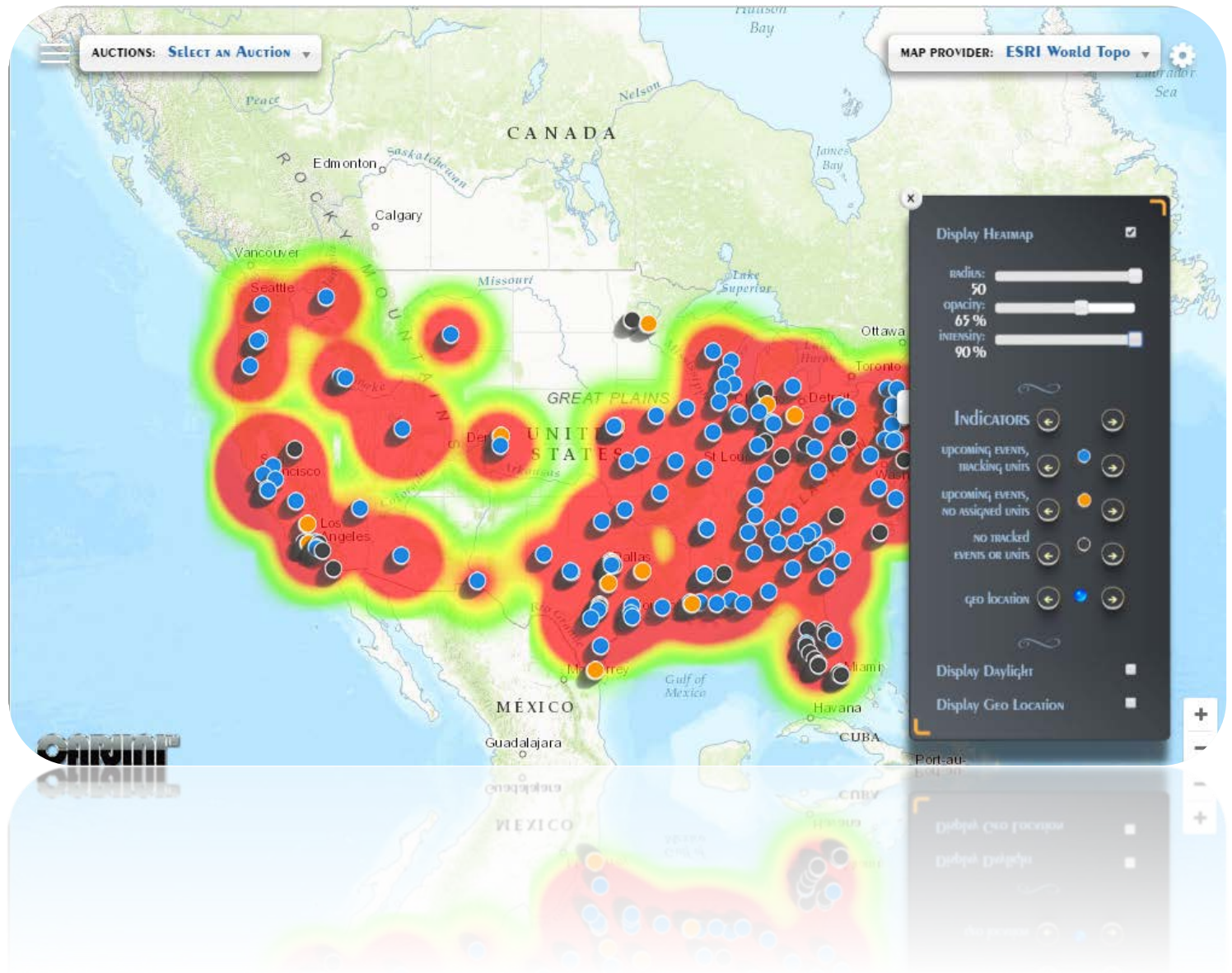
At the map zoom level in this screen capture the inventories for most auctions blend together.

Zooming in on any map area will begin to separate the individual regional auctions.



Auction Heatmap: High Intensity

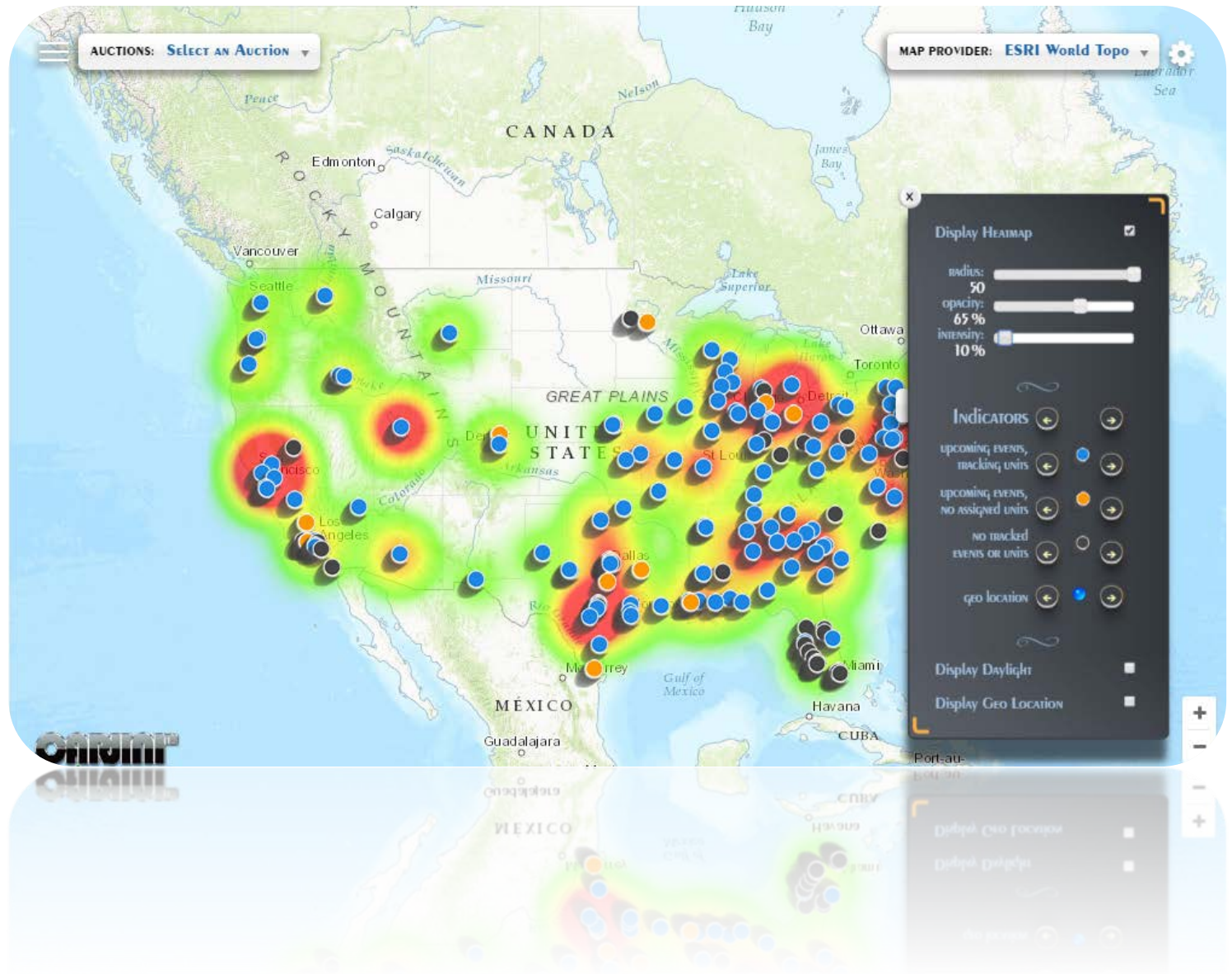
Heatmap with the intensity set and radius set to their maximum values.



Auction Heatmap: Low Intensity

Heatmap with the radius at maximum and the intensity near its absolute minimum.

This normalizes the color values as a true proportion of the associated inventory accumulations.



Auction Indicators

The Carjini auction map represents each regional auction by an icon representing the state of the auction. This state corresponds to whether there is an upcoming event and whether that event has active inventory being tracking by our system. Each of these icons can be customized to well over a hundred different representations supported in the current implementation. These icons can be individually selected and altered or switched to one of several pre-defined sets. The below sections cover the configuration and provide a sample of just a few of the many available icons for representing this data.

NOTE

Settings are persisted in the browser or application for public Carjini users. Partners with valid login credentials can optionally store settings such that changes are reflected across all their devices and sessions.

Indicator Controls

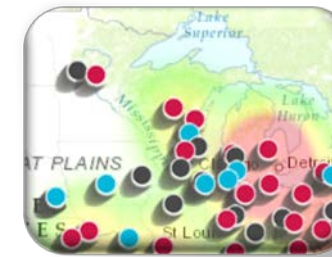
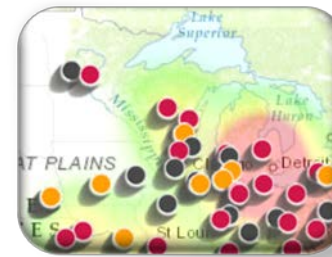
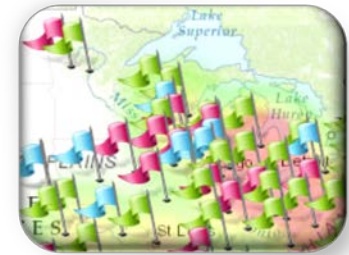
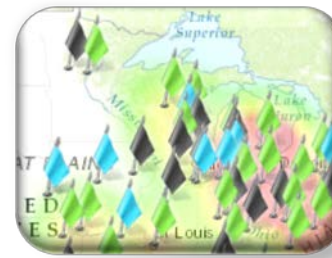
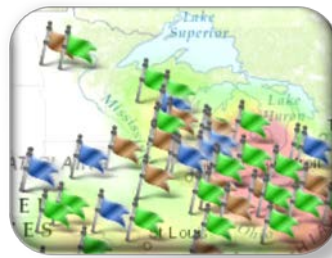
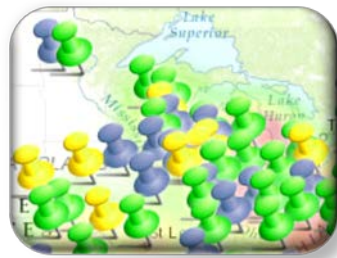
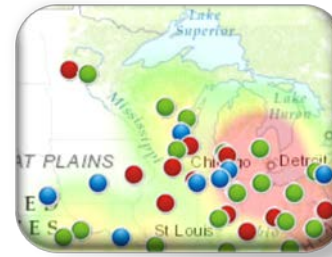
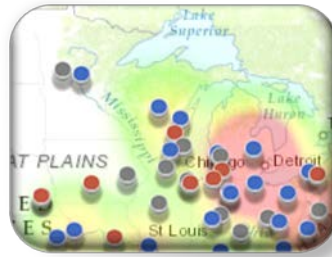
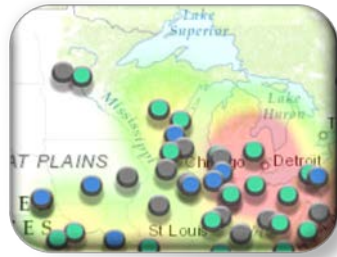
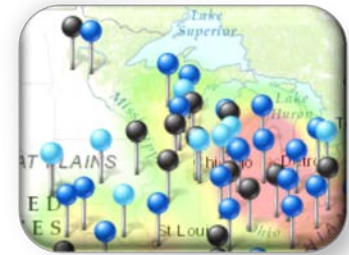
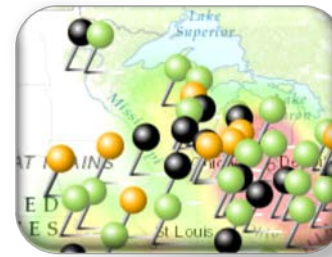
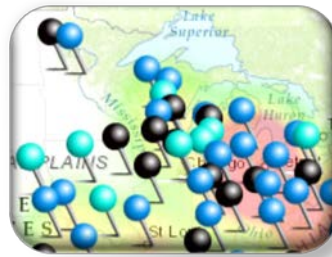
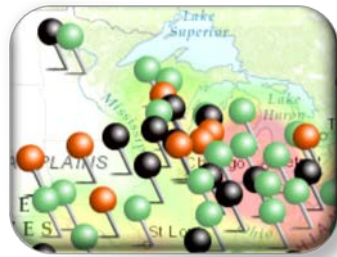
- a INDICATOR SETS**
Switch pre-defined collections of indicator icons.
- b TRACKED INVENTORY**
Adjust icon for Auctions with upcoming events and active inventories.
- c EVENTS, NO UNITS**
Adjusts icon for Auctions with upcoming events but without assigned inventory.
- d NO EVENTS, NO UNITS**
Adjust icon for Auctions without current events or assigned inventory.
- e GEO-LOCATION**
Adjust icon used to represent your location.
- f GEO-LOCATION TOGGLE**



INDICATOR SETS

A small sampling of the different pre-defined indicator sets for customization.

All icons can also be set individually. Mix and match with a customized map to find what works best for you and your devices.



MAP PROVIDERS

Maps

A varied selection of base maps are available using the map selector drop down.

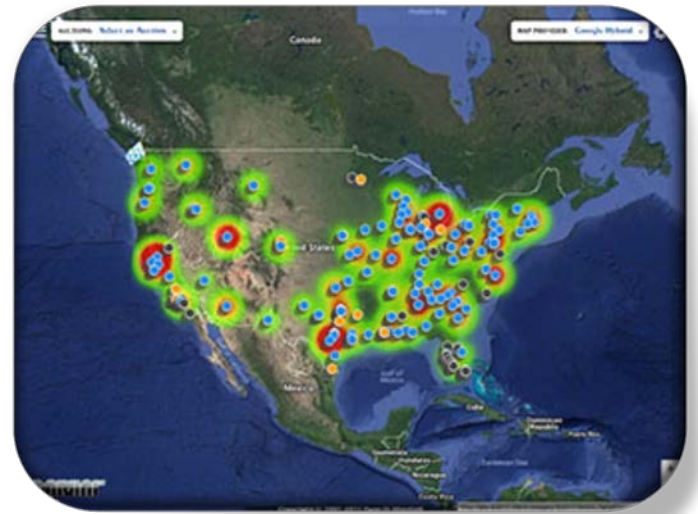
Map providers are a stylistic choice and do not alter the capabilities of the auction viewer.

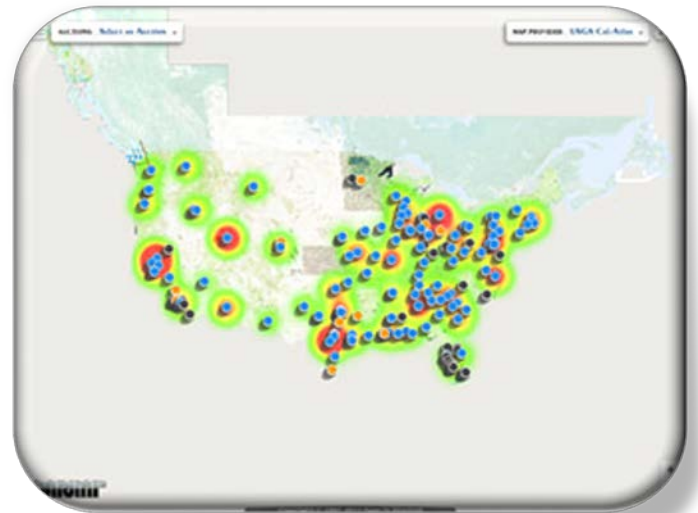
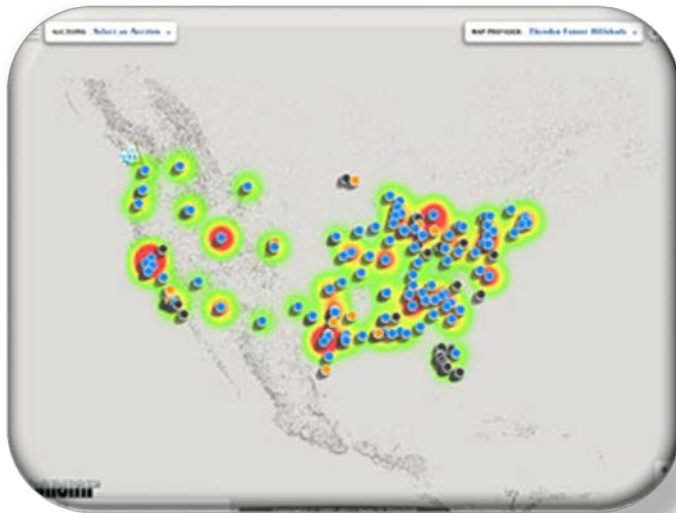
These are provided for user preference and vision impairment. Select from monotone, to high-contrast, to hand-crafted styles.

Combine with custom map indicators to fully tailor your view of the data.











CONTACT Us

Reach out to us, we would love to hear from you.

CARJINI

ONLINE | WWW.CARJINI.COM
EMAIL | HELP@CARJINI.COM
PHONE | +00 1 (206) 326-9096
ADDRESS | 215 10TH AVE EAST #004
SEATTLE, WA 98102

sevensoft™

ONLINE | WWW.SEVENSOFT.COM
EMAIL | RYAN@SEVENSOFT.COM
PHONE | +00 1 (206) 326-9096
ADDRESS | 1820A 11TH AVE E
SEATTLE, WA 98122